

SCAN ME



# Sensotek

Smart Sensing Solutions



## Sensotek Kappa X™ Plant Maintenance System

Sensotek Kappa X™ provides innovative machine health monitoring for industrial applications. Kappa X combines a proprietary means of transmitting data with professional software and robust wireless hardware for condition monitoring analysis.



PUMPS



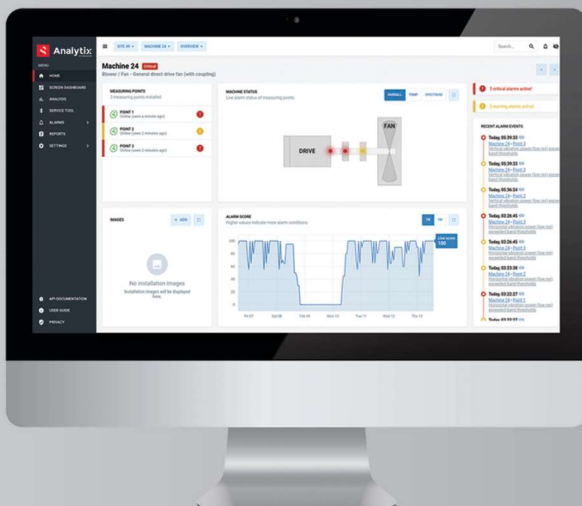
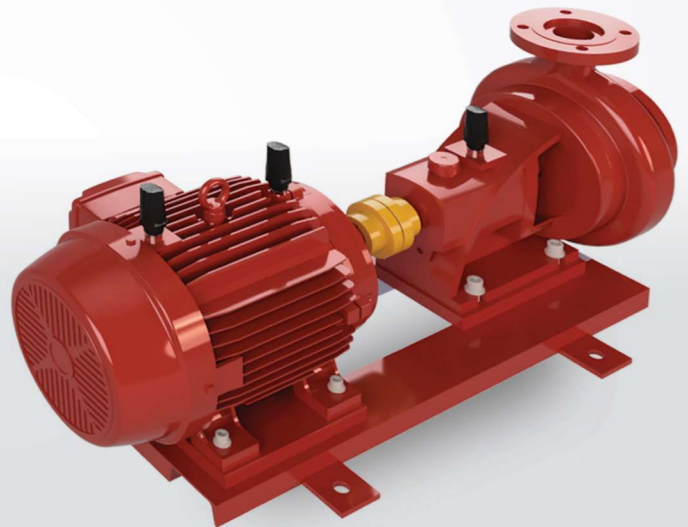
MOTORS



FANS

Sensotek Kappa X™ wireless sensors measure and transmit data every minute to ensure an accurate diagnosis can be performed on your machinery for predictive maintenance purposes. Condition monitoring reduces downtime, costs, and increases efficiency, extending your machines' life.

Kappa X is an evolution of wireless continuous health monitoring for a wide range of machinery. Built in partnership with vibration experts, Kappa X introduces a market leading 10kHz FMax, enabling earlier warning and increased diagnostic capability. Designed to monitor almost any application, Kappa X features a small footprint, waterproof housing, and a user-replaceable battery.



## Sensotek Analytix®

Sensotek Analytix® pioneers the user interface world when it comes to condition monitoring. Sleek design meets powerful analysis and reporting tools to give you one of the most advanced platforms available.

View high level data and an overall health rating. Delve deeper with full spectrum analysis, tracking harmonic peaks, bearing fault frequencies and side band amplitudes. Generate and share graphs at the click of a button.

With new features and updates added regularly, Analytix ensures you remain ahead of the game.



# Sensotek

Smart Sensing Solutions

## Kappa X Wireless Sensor

Kappa X's comprehensive feature set exceeds all expectations of a wireless sensor:

**Smart Wake** technology enables the sensor to enter ultra-low power mode, preserving battery life

**Auto-Ranging** allows the sensor to automatically scale up to +/-64G to cope with peak energy exerted by the machine

**User configuration** adapts the system to suit all applications

With upgradable firmware and a replaceable battery, Kappa X features one of the best wireless sensor lifespans on the market.



## Kappa X Gateway

The Kappa X Gateway provides an uplink from the sensors in your plant to the Sensotek Analytix® cloud platform via Wi-Fi, ethernet or cellular connection. It also monitors ambient temperature to account for daily and seasonal fluctuations.

The Gateway receives data from the sensors, collates it into internet protocol and communicates this information for viewing and analysis.

Kappa X's proprietary sub 1GHz ISM band protocol relays data over long-range, high noise environments to accommodate large-scale industrial installations.

## Sensor Specifications

### Detects

- ▶ Bearing Failure
- ▶ Mechanical Looseness
- ▶ Imbalance
- ▶ Misalignment
- ▶ Shaft and Bearing Wear
- ▶ Electrical Noise and Resonance

### Key Measurements

RMS Velocity/Acceleration, Peak to Peak (Every minute/Configurable)  
 Acceleration Time Waveform (Configurable time period)  
 Spectrum (Acceleration, Velocity, Displacement)

### 10 kHz

Fmax (X, Y, Z)

### 64G

Vibration Limit (+/-)

### IP69K (ATEX Zone 0 Available)

Environmental Protection

### 5 Years\*

Replaceable Battery

## Gateway Specifications

### Key Benefits

Proprietary RF Link Ensures Robust Data Connection  
 Easy Install  
 Small Form Factor

### Compatibility

Sensotek Kappa, Kappa X and Tau Sensors  
 Sensotek Analytix Platform  
 Sensotek Install App

### 250m

Wireless Range (Line of Sight)

### Wi-Fi, Ethernet

Connection to LAN

### IP64 (ATEX Zone 2 Available)

Environmental Protection

### Cellular

Optional Connection

\*With standard configuration and normal operating conditions

The Sensotek® sensor range is used to continuously monitor your rotating equipment in different environments. Reporting key parameters to our cloud based Sensotek Analytix® platform.



The Sensotek® Gateway has been specifically developed to connect with all our entire sensor range. The gateway provides connectivity for Kappa and Tau to the Analytix Cloud Platform.

### Key Features

- Connects Sensotek Kappa and Tau
- Waterproof (IP65)
- Robust metal enclosure
- Easy setup and installation
- High gain antennas
- Range of communication options

Mechanical	
<b>Physical</b>	
Dimensions	Shown on next page
Weight	640g (±20g)
Material	Aluminium (6000 series)
Mounting Options ( <i>m</i> )	0 = Bolted (Standard) 1 = DIN Rail Adaptor 2 = Pole mount
<b>Environmental</b>	
Operating Temperature	-20 to 85°C (-4 to 185°F)
Storage Temperature	-20 to 85°C (-4 to 185°F)
Sealing	IP65
Shock	50g

Power Source	
<b>Wired</b>	
Input Voltage	12vdc Nominal 7vdc minimum 24vdc maximum
Current	1.0 amp peak (wifi) 2.0 amp peak (cellular)
Connection	2-pin IP65
Power Supply	Standard 1.5m cable with plug and multi-region adapter supplied

Part Numbering (Options must be specified)	
<b>AN-G03-<u>m</u>01-<u>c</u>0-ZC2</b>	
Mounting Options ( <i>m</i> )	0 = Bolted (Standard) 1 = DIN Rail Adaptor 2 = Pole mount
Communication ( <i>c</i> )	1 = WiFi 2 = Cellular

Communication	
<b>Sensor Data Reception</b>	
Effective Range	250 meters Line-of-Sight
Frequency	<1GHz ISM Band
Sensotek Channel	Channel 1 or 2
<b>Cloud Communications</b>	
Comms Option ( <i>c</i> )	1 = WiFi 2 = Cellular
<b>WiFi</b>	
Frequency	2.4GHz IEEE 802.11b/g/n
Protocol	CoAP over TCP
Encryption	AES
Authentication	RSA public/private keys

Measurements	
<b>Ambient Temperature</b>	
Temperature Range	-20 to 85°C (-4 to 185°F)
Temperature Accuracy	±0.1°C

The Sensotek® sensor range is used to continuously monitor your rotating equipment in different environments. Reporting key parameters to our cloud based Sensotek Analytix® platform.

## Dimensions

Standard – DIN Rail Bracket can be removed – See DOC-00499 for Installation Guidelines

