



MODBUS RTU

## DESCRIPTION

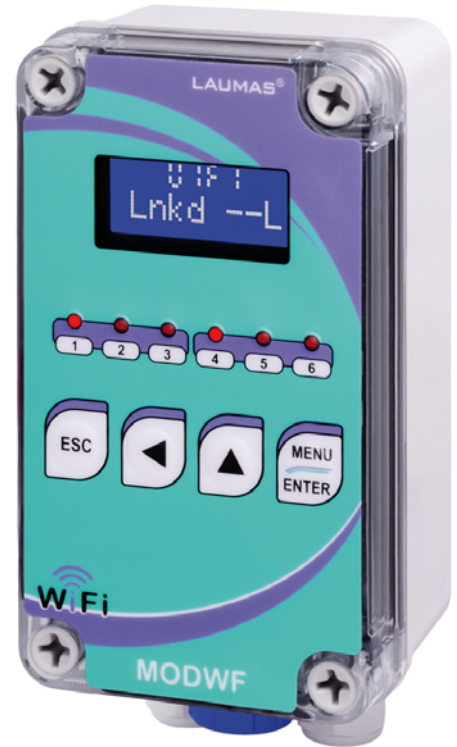
- WiFi communication interface device between two serial devices.
- Transceiver in IP67 polycarbonate box with 2 M16x1.5 cable glands.
- Dimensions: 80x170x65 mm (four fixing holes Ø4 mm; centre distance: 60x120 mm).
- Backlit alphanumeric LCD display, two-line by 8-digit (5 mm height), visible area: 38x16 mm.
- 6 signalling LED.
- 4-key keyboard.

## INPUTS/OUTPUTS AND COMMUNICATION

- WiFi module for wireless connection with ModBus RTU, ASCII Laumas protocols.
- RS485/RS232 serial ports for communication via protocols ModBus RTU, ASCII Laumas or continuous one way transmission.

## MAIN FUNCTIONS

- Connections to:
  - PC via WiFi/virtual Ethernet port;
  - PC/PLC via RS485/RS232 (up to 99 instruments with line repeaters, up to 32 without line repeaters);
  - others MODWF devices and W series weight indicators (equipped with OPZW1RADIO optional module) via WiFi.
- WiFi/serial tunnel function.
- Communication with existing WiFi networks.
- Energy saving mode.

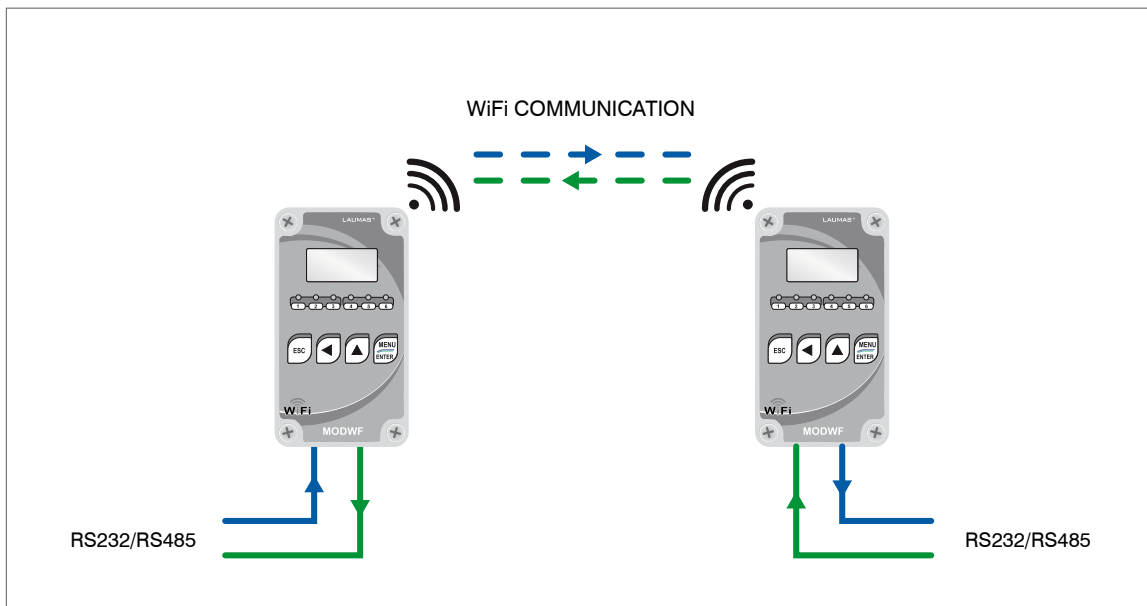


## CERTIFICATIONS



- EAC** Complies with the Eurasian Custom Union standards
- UK CA** Equivalent of the CE marking for the United Kingdom

## TECHNICAL FEATURES

Power supply and consumption	12÷24 VDC ±10%; 2 W
Serial ports	RS485, RS232
Baud rate	2400, 4800, 9600, 19200, 38400, 115200 (bit/s)
Wireless	WiFi module (2.4 GHz) with serial protocols in tunnel mode. Radio range up to 100 m line of sight.
Humidity (condensate free)	85%
Storage temperature	-30 °C +80 °C
Working temperature	-20 °C +60 °C



## OPTIONS ON REQUEST

	DESCRIPTION	CODE
	<p><b>Rechargeable external lead battery.</b></p> <ul style="list-style-type: none"> <li>■ 12 V - 2800 mAh capacity</li> <li>■ IP67 polycarbonate box 160x80x85 mm with transparent cover (4 fixing holes Ø4 mm; centre distance: 152x122 mm).</li> <li>■ Battery charger.</li> <li>■ 26 hours operating time*.</li> </ul>	BATEXT
	<p><b>Rechargeable internal NiMH battery.</b></p> <ul style="list-style-type: none"> <li>■ 8 elements - 1.2 V - AA type - 2450 mAh capacity.</li> <li>■ Supplied already installed in the instrument, with external dedicated switch; overall box dimensions: 190x80x65 mm.</li> <li>■ 24 hours operating time*.</li> </ul>	OPZBATTWF

\* Approx. maximum operating time for typical use with fully charged battery, with 4 load cells (350 ohm) and energy saving mode enabled.

The Company reserves the right to make changes to the technical data, drawings and images without notice.

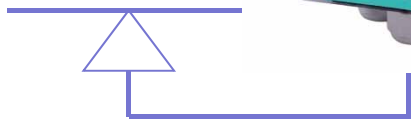
# EXAMPLES OF UTILISATION



TLKWF



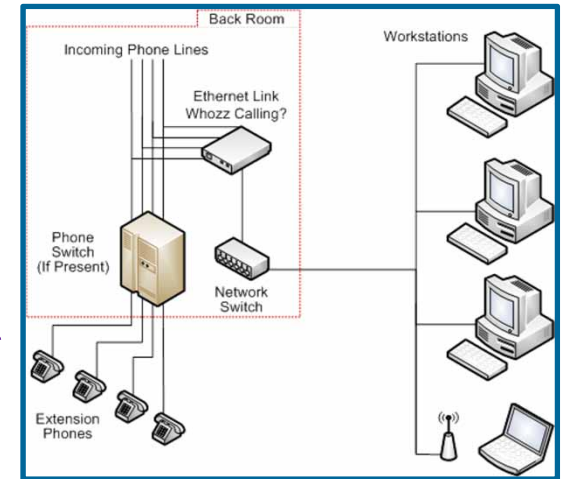
Load Cell



MODWF



RS-485



W Series  
(OPZW1RADIO)

# TLKWF - W Series (OPZW1RADIO) - NETWORK

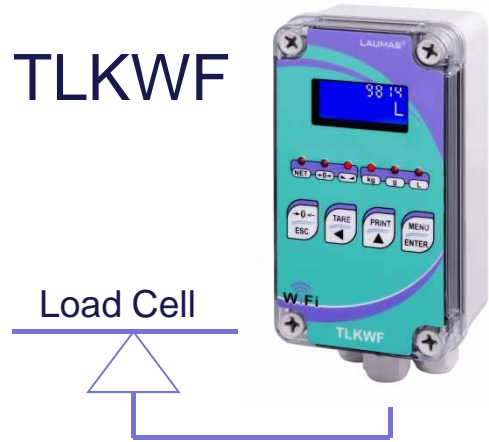
INSTRUMENTS SET AS CLIENT WITH DIFFERENT IP ADDRESSES



# TLKWF - MODWF - PC/PLC



TLKWF

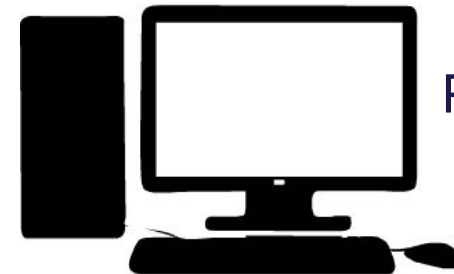


RIP, MODBUS, SLAVE, ASCII, etc.

MODWF



RS232 o RS485



PC/PLC



# INSTRUMENTS - MODWF - PC/PLC



MODWF



RIP, MODBUS, SLAVE, ASCII, etc.

MODWF



RS-485



RS232 o RS485

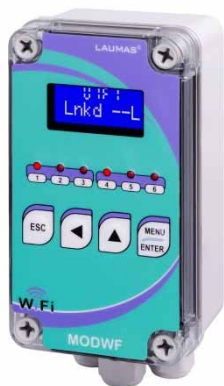




# MODWF - INSTRUMENTS/PC/PLC



MODWF



RIP, MODBUS, SLAVE, ASCII, etc.

MODWF



RS-232



PC/PLC



RS232 o RS485



PC/PLC



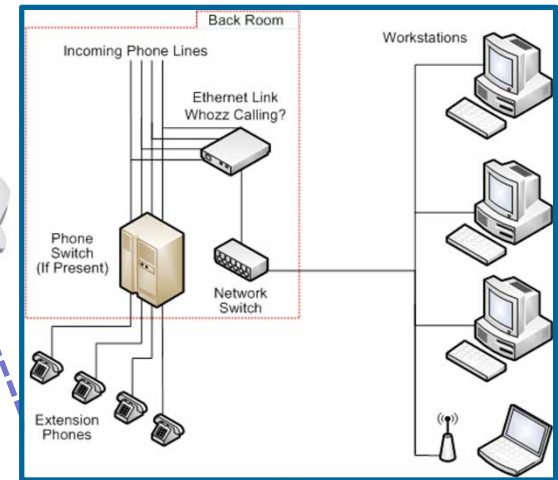
(OPZW1RADIO)



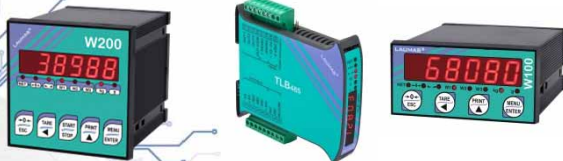
# INSTRUMENTS – MODWF - NETWORK

INSTRUMENTS SET AS CLIENT WITH DIFFERENT IP ADDRESSES

## MODWF



RS-485





# INSTRUMENTS - MODWF - APP



- APP AND SOFTWARE BY CUSTOMER
- LAUMAS CAN PROVIDE THE PROG-NG WITH THE VIRTUAL SERIAL PORT

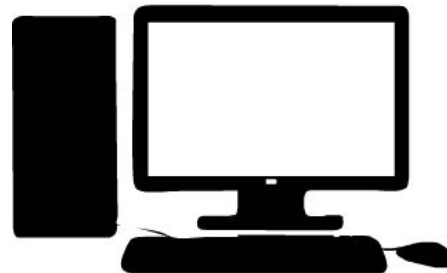
MODWF



RS-485



PC/PLC



# W Series (OPZW1RADIO) - MODWF - PC/PLC

SOFTWARE BY CUSTOMER

(OPZW1RADIO)



Load Cell



RIP, MODBUS, SLAVE, ASCII, etc.



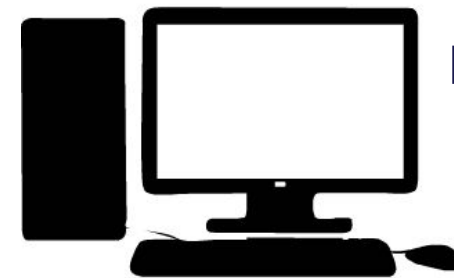
MODWF



RS232 o RS485



PC/PLC



# W Series (OPZW1RADIO) - TLKWF - PC/PLC

- TLKWF OPERATES AS REPEATER
- POSSIBILITY OF READING DATA FROM PC/PLC AND KEEPING THE WIFI CONNECTION AT THE SAME TIME

(OPZW1RADIO)

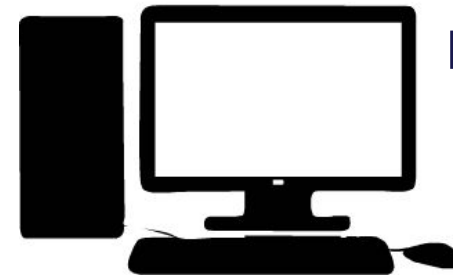


Load Cell



TLKWF

RS232 o RS485



PC/PLC

# INTEGRATED WEBSITE

## TLKWF and Instruments W Series with OPZW1RADIO

INSTRUMENTS SET AS CLIENT OR AS ACCESS POINT

