

## Han 6 HPR Base Panel Screw locking

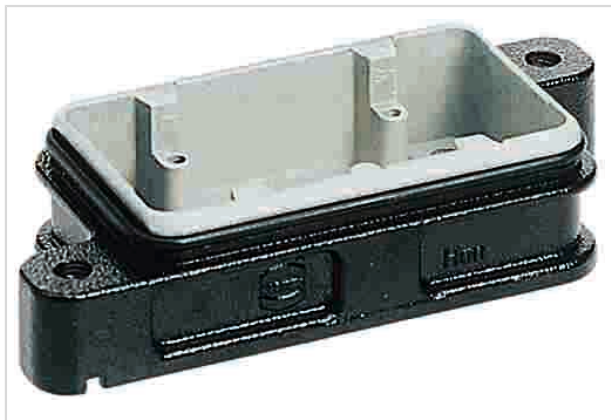


Image is for illustration purposes only. Please refer to product description.

Part number	09 40 006 0311
Specification	Han 6 HPR Base Panel Screw locking
HARTING eCatalogue	<a href="https://b2b.harting.com/09400060311">https://b2b.harting.com/09400060311</a>

### Identification

Category	Hoods/Housings
Series of hoods/housings	Han <sup>®</sup> HPR
Type of hood/housing	Bulkhead mounted housing

### Version

Size	6 B
Locking type	Screw locking
Field of application	Hoods/housings for harsh outdoor environments

### Technical characteristics

Tightening torque (screw locking)	4 Nm
Limiting temperature	-40 ... +125 °C
Degree of protection acc. to IEC 60529	IP65 IP68 IP69 / IPX9K acc. to ISO 20653
Type rating acc. to UL 50 / UL 50E	4 4X 12

### Material properties

Material (hood/housing)	Aluminium die-cast Corrosion resistant
Surface (hood/housing)	Powder-coated
Colour (hood/housing)	RAL 9005 (jet black)
Material (seal)	NBR



Pushing Performance

## Material properties

RoHS	compliant
ELV status	compliant
China RoHS	e
REACH Annex XVII substances	No
REACH ANNEX XIV substances	No
REACH SVHC substances	No
California Proposition 65 substances	Yes
California Proposition 65 substances	Nickel Naphthalene

## Specifications and approvals

Approvals	DNV GL
UL / CSA	UL 1977 ECBT2.E235076 CSA-C22.2 No. 182.3 ECBT8.E235076
CE	Yes

## Commercial data

Packaging size	1
Net weight	155.6 g
Country of origin	Germany
European customs tariff number	85389099
eCl@ss	27440202 Shell for industrial connectors