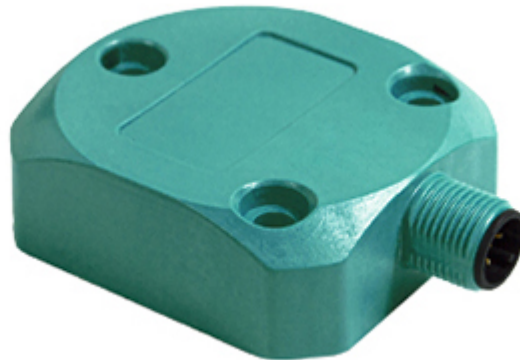


TILTIX Inclinometer

ACS-180-1-AC00-VE3-PQ



General Specifications

Application	1-Axis Position Monitoring and Leveling
Measurement Range	180°
Absolute Accuracy	±0.10°
Resolution	0.01°
Cycle Time Base Sensor	500 µs
Device Orientation	Vertical

Electrical Specifications

Supply Voltage	10 - 30 VDC
Power Consumption (no load)	≤ 0.7 W
EMC: Emitted Interference	DIN EN 61000-6-4
EMC: Noise Immunity	DIN EN 61000-6-2
Reverse Polarity Protection	Yes
Short Circuit Protection	Yes
MTTF	400 years @ 40 °C

Environmental Specifications

Operating Temperature	-40 °C (-40 °F) - +85 °C (+185 °F)
Storage Temperature	-40 °C (-40 °F) - +85 °C (+185 °F)
Temperature Gradient	0.004°/ K
Protection Class	IP66/IP67

Data Sheet

Printed at 2-07-2024 23:07

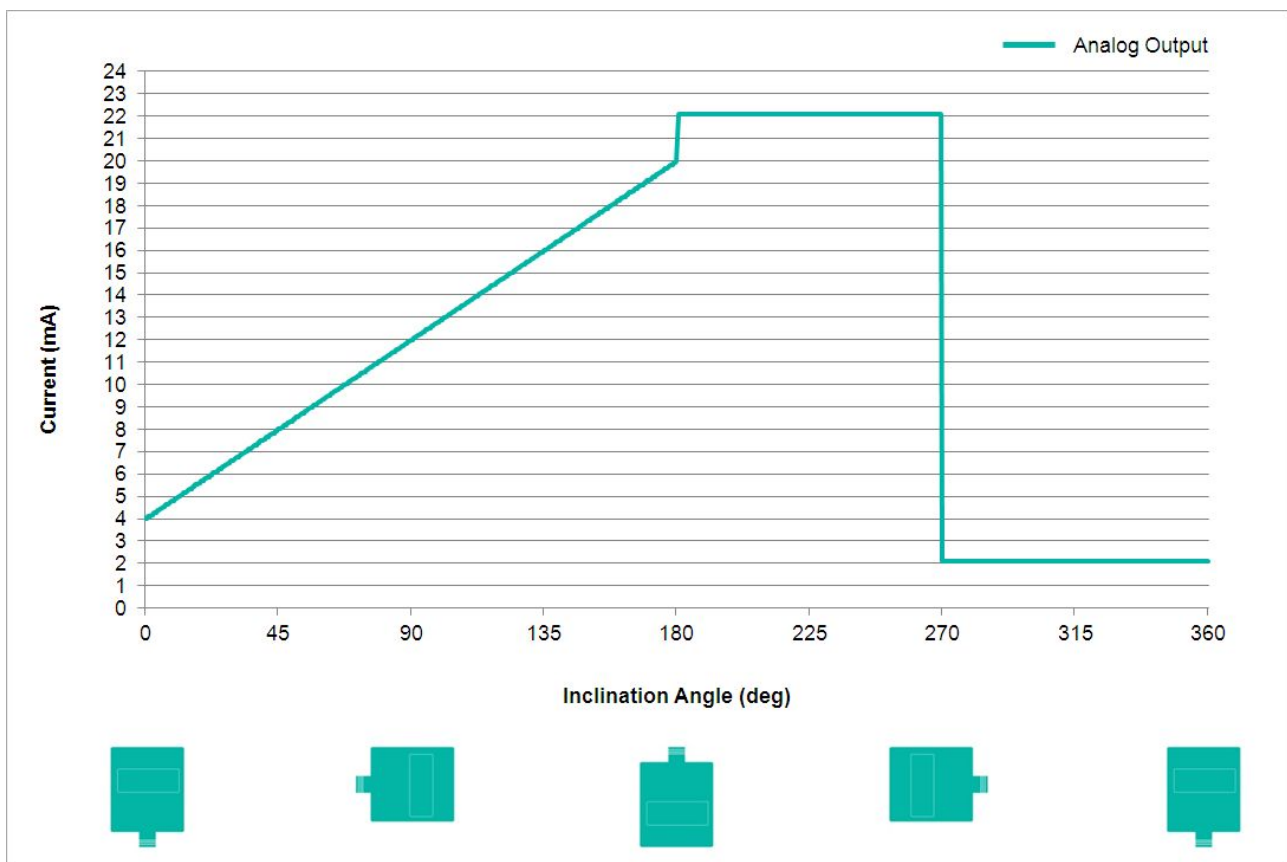
Shock Resistance	≤ 100 g (half sine 6 ms, EN 60068-2-27)
Vibration Resistance	1.5 mm (10 Hz - 58 Hz) & ≤ 20 g (58 Hz to 2000 Hz)

Mechanical Specifications

Housing Material	Fibre-Reinforced PBT (Polybutylene Terephthalate)
Potting Material	None
Weight	100 g (0.22 lb)

Interface

Interface	Analog Current 4 - 20 mA
Settling Time	min 30 ms; default 200 ms (dependent on filter settings)
Output Type	Current 4 - 20 mA
Max Load Resistance	270 Ω @ 10 V DC (500 Ω @ 15 V DC)
Linearity	± 0.02%





Electrical Connection

Connection Type	Connector M12 (8 pin)
Connector	M12, Male, 8 pin, a coded

Product Life Cycle

Product Life Cycle	New
--------------------	-----

Certification

Approval	CE
----------	----

Connection Plan

SIGNAL	PIN NUMBER
Power Supply	1
GND	4
Z-Axis, Current Output	5
Set1	6
Do Not Connect	8
Do Not Connect	2
Do Not Connect	3
Do Not Connect	7

Dimensional Drawing

[2D Drawing](#)

Accessories

Connectors & Cables

10m PUR Cable, 8pin, A-Coded, f

POS M12 8pin-A Female+5m PUR Cable

POS M12 8pin-A Female+2m PUR Cable

POS M12 8pin-A Female+10m PUR Cable

M12, 8pin A-Coded, Female

More

Displays

AP22-D0 Analog Display (4 dig. o/p)

DiMod-A Analog Display

Got questions? Need an individual solution? We are here to help!



Contact Us

All dimension in [inch] mm. This drawing and the information contained is for general presentation purposes only. Please refer to the "Download" section for detailed technical drawings. © FRABA B.V., All rights reserved. We do not assume responsibility for technical inaccuracies or omissions. Specifications are subject to change without notice.