

ENGLISH



ENGLISH



ENGLISH



ENGLISH

Installation and maintenance instructions version 1.00

CASTLM8I3A CASTLM8I



SYMBOLS

Here are the symbols used in the manual to draw the reader's attention:



Caution! Risk of electric shock.



Caution! This operation must be performed by skilled personnel.



Pay particular attention to the following instructions.



Further information.

WARRANTY

24 months from the date of the delivery note. Warranty covers only failures of defective components (due to construction defects or defects in materials) and includes replacement or repair of the components and related labor costs.

Warranty is automatically forfeited in the event of:

- tampering, deletion, removal of the identification label and/or serial number of the product
- misuse, transformation, alteration, repair of products not carried out by Laumas personnel

Laumas provides a 1-year warranty from the date of the delivery note on defects in material or manufacture of the battery.

GUIDELINES FOR PROPER DISPOSAL



**Sealed Lead Acid
Battery
Must be recycled
Properly**

This symbol on the product or packaging indicates that:

- This is electrical/electronic equipment and cannot be disposed of as municipal solid waste, but must be delivered to a recycling center
- Improper use or disposal can pollute the environment or damage human health
- Non-compliance with these guidelines will be penalized in accordance with the regulations in force in the country of destination
- It is recommended to dispose of the packing and packaging as required by local regulations

TABLE OF CONTENTS

USER WARNINGS	1
PARTS IDENTIFICATION	2
TECHNICAL SPECIFICATIONS	3
INSTALLATION	3
OPTIONS	5
STAFFETLM8I / STAFFETLM8IEX	5
SANITIZATION AND MAINTENANCE (CASTLM8I3A)	6
SANITIZATION	6
MAINTENANCE	6

USER WARNINGS

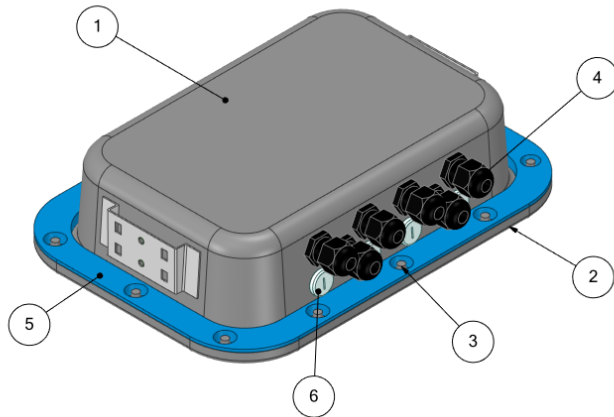
RECOMMENDATIONS FOR THE PROPER USE OF WEIGHING INSTRUMENT

- Keep away from heat sources and direct sunlight
- Do not dip in water
- Do not install in areas subject to explosion hazard

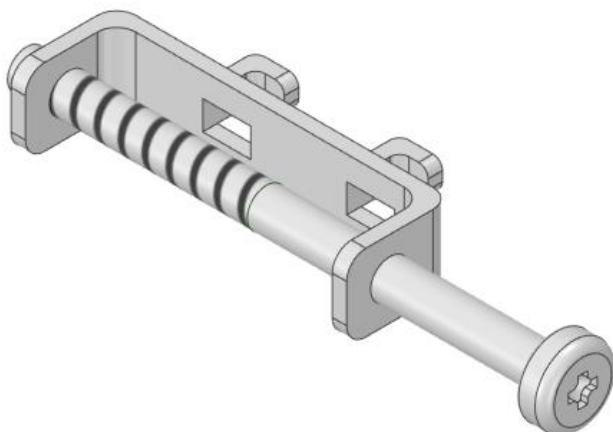
The following table shows the material of the instrument components exposed to external agents:

COMPONENT	MATERIAL	DETAILS
Front shell	Stainless steel	AISI304
Back shell	Stainless steel	AISI304
Nuts M5	Stainless steel	AISI316
Hygienic seal	Silicone	VMQ blue RAL5015
Plugs M12	Plastic	PA6.6
Cable glands	Plastic	PA6.6
O-Ring	Elastomer	NBR
Keyboard	Plastic	Polyester D9605

PARTS IDENTIFICATION



1. Back shell.
2. Front shell.
3. Nuts M5.
4. Cable glands.
5. Hygienic seal.
6. Plugs M12.
7. Keyboard.
8. Fixing plates.



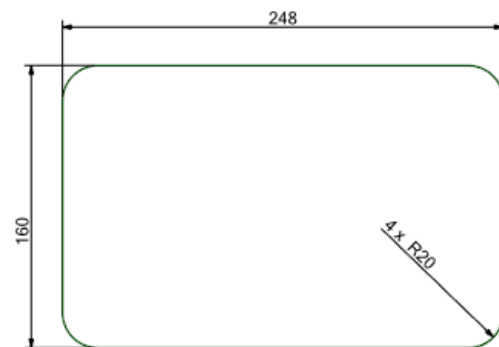
Installation supports.

TECHNICAL SPECIFICATIONS

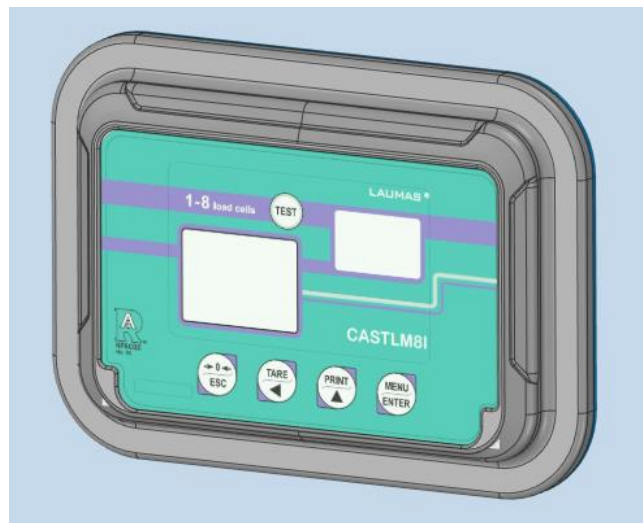
HUMIDITY (non condensing)	85%
PROTECTION RATING	CASTLM8I: IP68/IP69K (optional)
	CASTLM8I3A: IP68/IP69K
STORAGE TEMPERATURE (INTERNAL TLM8)	-30°C +80°C
WORKING TEMPERATURE (INTERNAL TLM8)	-20°C +60°C

INSTALLATION

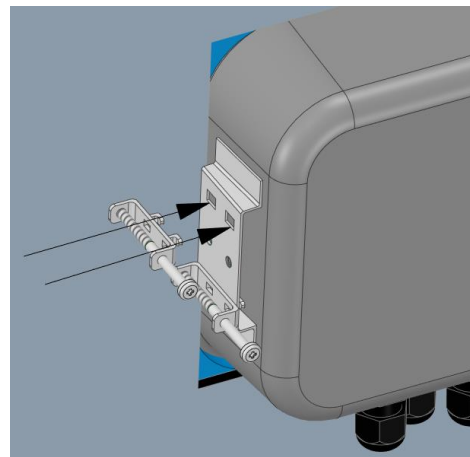
- PRELIMINARY OPERATION: make an opening on the panel as shown in the figure;



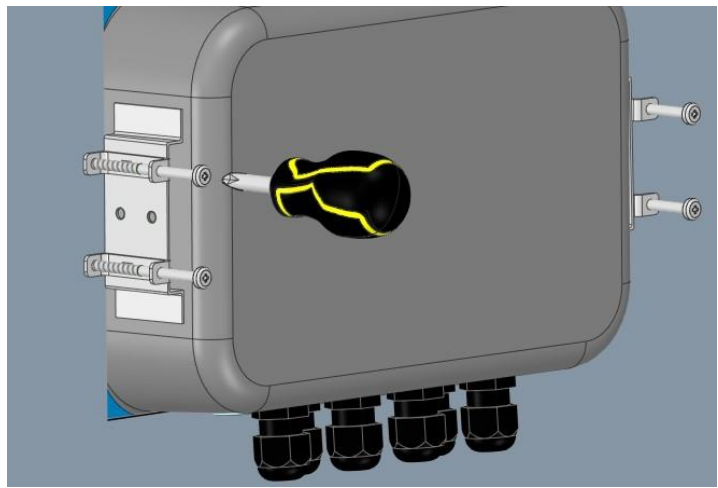
- insert the instrument into the opening;



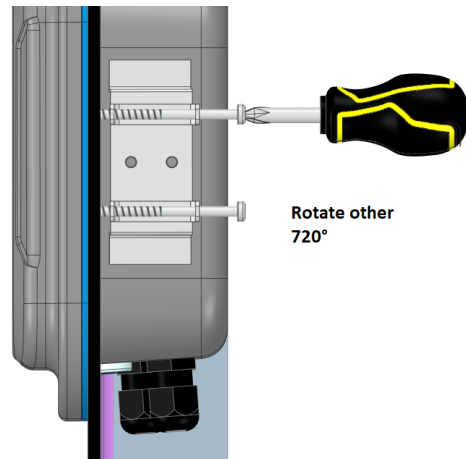
- insert the installation supports in the fixing plates of the instrument;



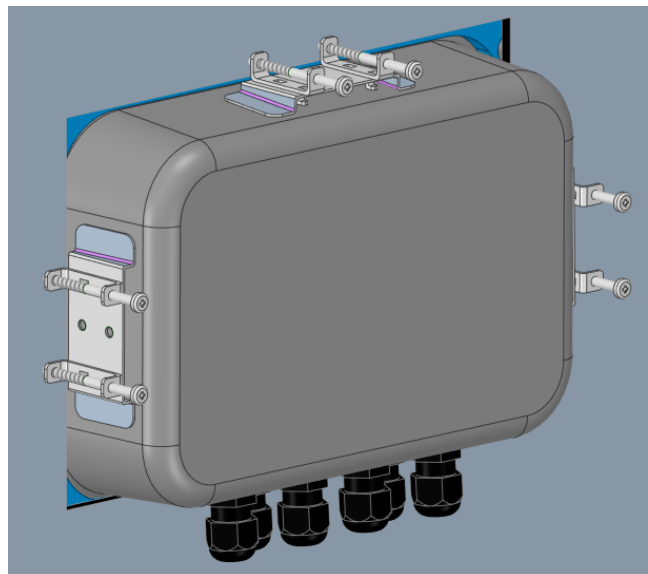
- tighten the screws of the supports until they are flush;



- when the stop is reached, tighten the screws of the supports until the seal is firmly pressed on the panel;



- check that all screws are properly tensioned.



OPTIONS

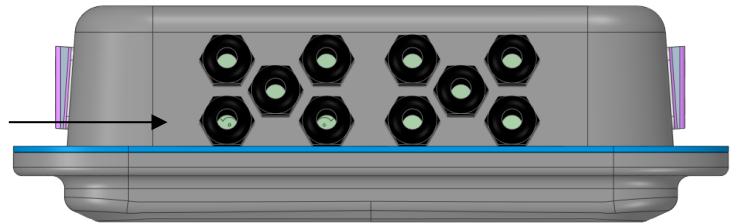
STAFFETLM8I / STAFFETLM8IEX

Instrument

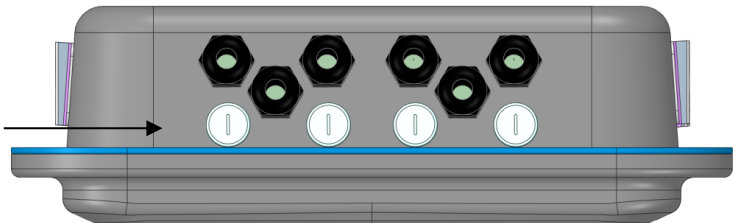
CASTLM8I

Optional: kit for front panel mounting.

- remove the first row of cable glands;



- screw the M12 plugs on;
- proceed as described in the **INSTALLATION** section.

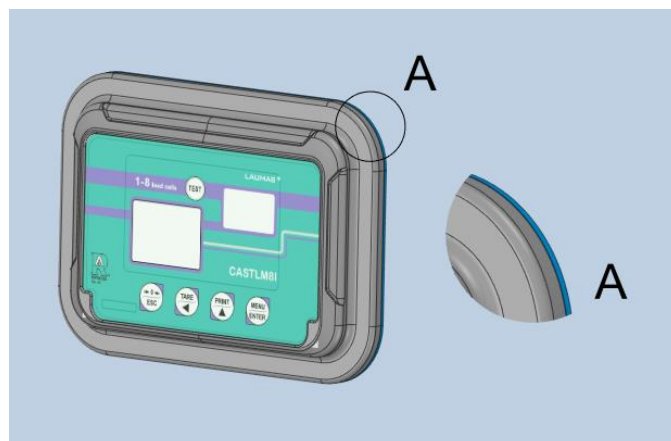


SANITIZATION AND MAINTENANCE (CASTLM8I3A)

SANITIZATION

1) Perform a first rinse with water at a maximum temperature of 40 °C.

2) Distribute an alkaline detergent at a maximum temperature of 100 °C and leave it to act for about 10 minutes, respecting the supplier's concentration specifications.



3) Rinse with water at a maximum temperature of 100 °C: direct a low pressure jet toward the components, at an angle of approximately 45° and a distance of at least 300 mm to avoid damaging the seals; pay particular attention to the points indicated in the figure.

4) To remove any remaining particles of dirt, use soft brushes or plastic scrapers; do not use abrasive components to avoid damaging the components and altering surface roughness.

MAINTENANCE

- Periodically check the seals and verify that they are not damaged: if there are any cracks, replace them with genuine spare parts.
- Periodically check the instrument body, cable glands and cables: if any damage is found, replace the affected part.
- Observe the instructions in the manual regarding the installation and positioning.
- During all maintenance operations, make sure that the bearing surface is clean and that the surrounding area has been sanitized to avoid introducing any particles of dirt.
- To ensure optimum component washability, it is essential that the surface of the stainless steel parts is smooth and free from any scoring or scratches: these defects foster bacterial proliferation and require replacing the part.

On our website www.laumas.com there are videos on the guidelines for correct installation of weighing systems and video tutorials on configuring our transmitters and weight indicators.

All Laumas product manuals are available online. You can download the manuals in PDF format from www.laumas.com by consulting the Products section or the Download Area. Registration is required.

Think about the environment before you print!

CERTIFICATION OF THE ENVIRONMENTAL MANAGEMENT SYSTEM
in accordance with UNI EN ISO 14001.

Laumas contributes to environmental protection by saving on paper consumption.