

Han 10 A-agg-LB

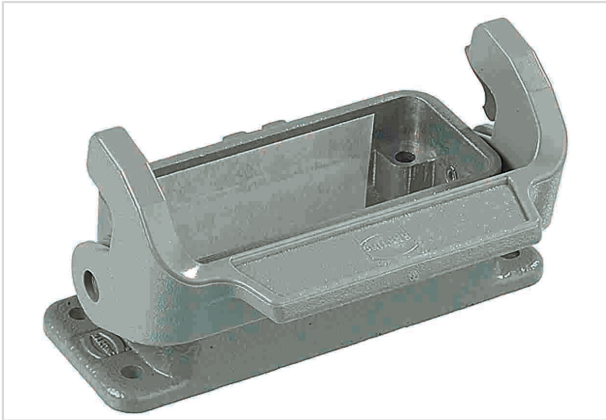


Image is for illustration purposes only. Please refer to product description.

| | |
|--------------------|---|
| Part number | 09 20 010 0301 |
| Specification | Han 10 A-agg-LB |
| HARTING eCatalogue | https://b2b.harting.com/09200100301 |

Identification

| | |
|--------------------------|--------------------------|
| Category | Hoods/Housings |
| Series of hoods/housings | Han A [®] |
| Type of hood/housing | Bulkhead mounted housing |
| Type | Low construction |

Version

| | |
|----------------------------|---|
| Size | 10 A |
| Locking type | Single locking lever |
| Han-Easy Lock [®] | Yes |
| Field of application | Standard Hoods/housings for industrial applications |

Technical characteristics

| | |
|--|-----------------|
| Limiting temperature | -40 ... +125 °C |
| Degree of protection acc. to IEC 60529 | IP65 |
| Type rating acc. to UL 50 / UL 50E | 4 4X 12 |

Material properties

| | |
|-------------------------|----------------------|
| Material (hood/housing) | Aluminium die-cast |
| Surface (hood/housing) | Powder-coated |
| Colour (hood/housing) | RAL 7037 (dust grey) |
| Material (seal) | NBR |



Pushing Performance

Material properties

| | |
|--|---|
| Material (locking) | Polycarbonate (PC) Stainless steel |
| Colour (locking) | RAL 7037 (dust grey) |
| Material flammability class acc. to UL 94 (locking levers) | V-0 |
| RoHS | compliant |
| ELV status | compliant |
| China RoHS | e |
| REACH Annex XVII substances | No |
| REACH ANNEX XIV substances | No |
| REACH SVHC substances | Yes |
| REACH SVHC substances | Potassium 1,1,2,2,3,3,4,4,4-nonafluorobutane-1-sulphonate |
| California Proposition 65 substances | Yes |
| California Proposition 65 substances | Nickel Lead Naphthalene |

Specifications and approvals

| | |
|-----------|--|
| Approvals | DNV GL |
| UL / CSA | UL 1977 ECBT2.E235076 CSA-C22.2 No. 182.3 ECBT8.E235076 |
| CE | Yes |

Commercial data

| | |
|--------------------------------|--|
| Packaging size | 1 |
| Net weight | 55 g |
| Country of origin | Germany |
| European customs tariff number | 85389099 |
| eCl@ss | 27440202 Shell for industrial connectors |