

EXCEL DATA ACQUISITION SOFTWARE

Model : SW-E802



Your purchase of this EXCEL DATA ACQUISITION SOFTWARE marks a step forward for you into the field of precision measurement. Although this METER is a complex and delicate instrument, its durable structure developed. Please read the following instructions carefully and always keep this manual within easy reach.

OPERATION MANUAL

TABLE OF CONTENTS

1	INTRODUCTION	1
2	GENERAL SPECIFICATION.....	1
	2-1. System requirement.....	1
	2-2. Scan rate	1
	2-3. The format of data saving.....	1
	2-4. Accessories included.....	1
	2-5. Optional accessory.....	1
3	INSTALL AND START THE PROGRAM	2
	3-1. Installation.....	2
	3-2. Start the program.....	2
	3-3. Cooperate with the right interface cable	2
4	USING SW-E802.XLS.....	3
	4-1. The Initial screen of program running.....	3
	4-2. The button of panel description.....	4
	4-3. Saving files	6
	4-4. Fast operation buttons	6

1. INTRODUCTION

The SW-E802 is an Excel tool software which is easy to operate and enables LUTRON's full line RS232 serial instruments to be with data logging function. Sampling rate setting from 1 to 3600 seconds to satisfy your different demands and the common format xxx.xls is easier to read in another computer.

@ " Excel " is the software of " Microsoft Corporation ".

2. GENERAL SPECIFICATIONS

2-1 System requirement :

WIN 2000, WIN XP, VISTA, WIN 7

Microsoft Excel, version 2000, 2003, 2007, 2010.

2-2 Scan Rate :

1 to 3600 seconds

2-3 Data save: xxx.xls

2-4 Accessories Included :

* CD DISK..... 1 PC

* Operation manual..... 1 PC

2-5 Optional Accessories :

- 1) RS-232 cable, Model: UPCB-01, Direct RS232 cable is used to connect the meter to the COM port of computer.
- 2) RS-232 cable, Model: UPCB-02, Isolated RS232 cable is used to connect the meter to the COM port of computer.
- 3) USB cable, Model: USB-01, USB interface cable is used to connect the meter to the USB port of computer.

3. INSTALL AND START THE PROGRAM

3-1 Installation

Before installation, please remove the previous version data acquisition software.

- a. Start your windows.
- b. Insert the SW-E802 disc into your CD-ROM driver.
- c. Assume your CD-ROM driver is D:
Run "D:\setup.exe" and click "ok" to start install.

3-2 Start the program

Once you finish the installation, click the "SW-E802/SW-E802.xls" to execute from the program file.

3-3 Connect with the right interface cable to the RS232 terminal of the meter,

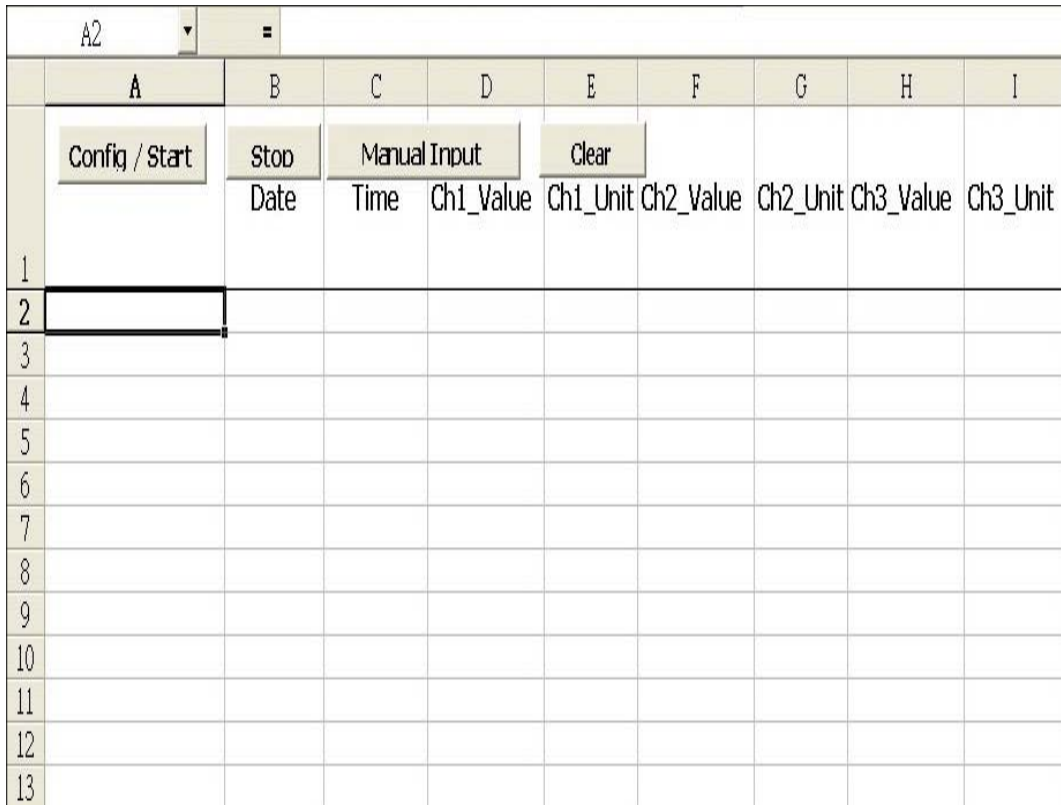
Before you start the program, please identify and make sure to use the right interface cable (optional)

USB cable : USB-01

RS232 cable : UPCB-01, UPCB-02

4. USING SW-E802.XLS

4-1 After running the program, the computer will show the screen as Fig. 1.



The screenshot shows an Excel spreadsheet with a control interface. The spreadsheet has columns A through I and rows 1 through 13. The following table represents the content of the spreadsheet:

	A	B	C	D	E	F	G	H	I
1	Config / Start	Stop Date	Manual Input Time	Ch1_Value	Ch1_Unit	Ch2_Value	Ch2_Unit	Ch3_Value	Ch3_Unit
2									
3									
4									
5									
6									
7									
8									
9									
10									
11									
12									
13									

Fig. 1

4-2 The button of panel description

- 1) Config / Start: Click " Config / Start" button, the display will show the window of system configuration as Fig. 2.

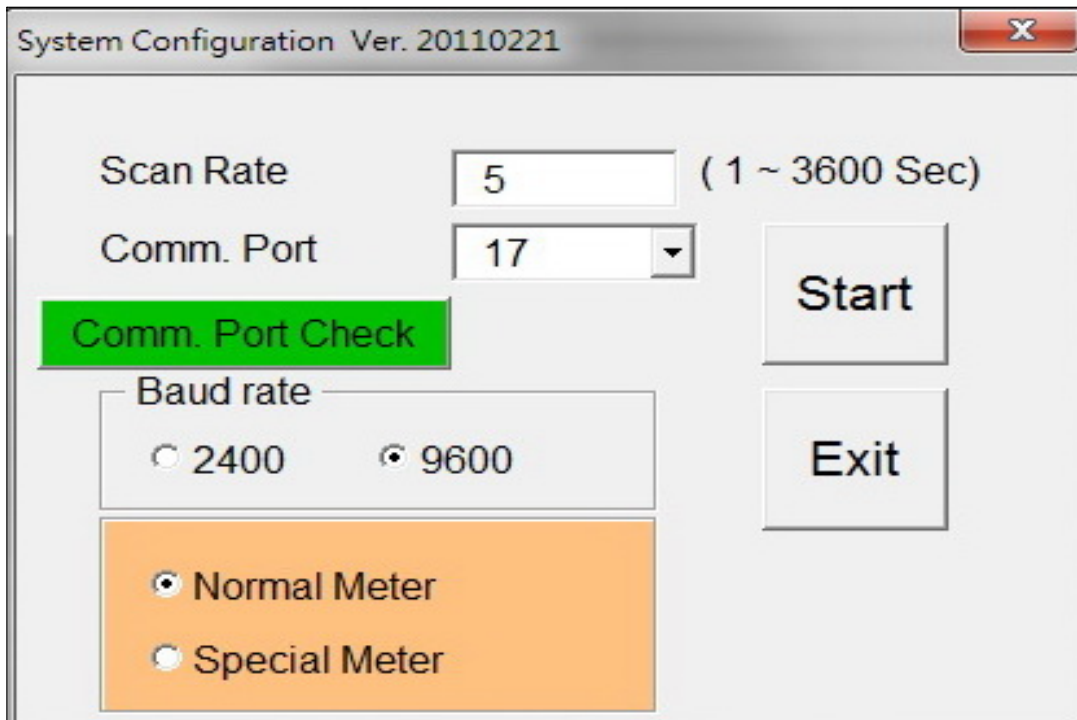


Fig. 2

- a. Scan Rate : To set the sampling time from 1 to 3600 seconds.
- b. Comm. Port : To set the correct comm. Port number which you are connecting.
- c. Comm. Port Check : Click the button will jump to the " Device Manager " of system, then click the " Connection Port " to check the port number which the USB cable is using.
- d. Baud Rate : Set the baud rate to 2400 bps or 9600 bps (recommend to 9600 bps).
- e. Start : When all the setting are finished, click "Start" will start the data logger list as following Fig 3.

	A	B	C	D	E	F	G	H	I	J	K
	Config / Start	Stop	Manual Input	Clear							
		Date	Time	Ch1_Value	Ch1_Unit	Ch2_Value	Ch2_Unit	Ch3_Value	Ch3_Unit	Ch4_Value	Ch4_Unit
1											
2	1	2011/8/2	18:20:48	6.99	pH		25	DEGREE	C		
3	2	2011/8/2	18:20:53	7	pH		25	DEGREE	C		
4	3	2011/8/2	18:20:58	7	pH		25	DEGREE	C		
5	4	2011/8/2	18:21:03	7	pH		25	DEGREE	C		
6	5	2011/8/2	18:21:08	6.99	pH		25	DEGREE	C		
7	6	2011/8/2	18:21:13	7	pH		25	DEGREE	C		
8	7	2011/8/2	18:21:18	6.99	pH		25	DEGREE	C		
9	8	2011/8/2	18:21:23	7	pH		25	DEGREE	C		
10	9	2011/8/2	18:21:28	6.99	pH		25	DEGREE	C		
11	10	2011/8/2	18:21:33	7	pH		25	DEGREE	C		
12	11	2011/8/2	18:21:38	7	pH		25	DEGREE	C		
13	12	2011/8/2	18:21:43	7	pH		25	DEGREE	C		
14	13	2011/8/2	18:21:48	7	pH		25	DEGREE	C		
15	14	2011/8/2	18:21:53	7	pH		25	DEGREE	C		
16	15	2011/8/2	18:21:58	7	pH		25	DEGREE	C		
17	16	2011/8/2	18:22:03	7	pH		25	DEGREE	C		
18	17	2011/8/2	18:22:08	7	pH		25	DEGREE	C		
19	18	2011/8/2	18:22:13	7	pH		25	DEGREE	C		
20	19	2011/8/2	18:22:18	7	pH		25	DEGREE	C		
21											
22											

Fig. 3

- g. Exit: Click "Exit" will exit the window of system configuration.
- 2) Stop : Click " Stop " button will interrupt the data logger function.
- 3) Manual Input : No matter the data record situation is run or pause, every time you click the button will record data once.
- 4) Clear : When click " Clear " button, a warning window will appear on the screen as Fig.4, if click on YES, the all listed data will be cleared.



Fig. 3

4-3 Saving files: When finish the Data logger, click " FILE>SAVE AS " to save the logged list to xxx.xls

4-4. Fast operation buttons

- ALT + S** —————▶ Config/Start
- ALT + P** —————▶ Stop
- ALT + M** —————▶ Manual Input
- ALT + C** —————▶ Clear